



THE HONG KONG STANDARDS AND TESTING CENTRE LTD.
EC DECLARATION OF CONFORMITY

Reference Number: LVD-S092120DOC

Chaozhou GAT Bathroom Equipment and
Supplies Manufacturing Co., Ltd.
Fengtang Industrial Zone, Chaoan,
Chaozhou, Guangdong, China

declare the product

Description: Steam Room Control
Brand Name: STEPON
Model: S163

complies with the requirements of the
EC Low Voltage Directive 2006/95/EC with amendments.

Applicable Standard(s):

EN60335-1: 2002+ A1: 2004 + A11: 2004 + A2: 2006 + A12: 2006
EN60335-2-105: 2005 + A1: 2008

General Remarks:

This declaration is only valid when used in conjunction with the technical file(s) refers to DE103469.

This declaration applies specifically to the sample(s) investigated in the technical report mentioned above and not to the bulk.

The CE markings as shown below can be affixed on the product after preparation of necessary conformity documentation, as stipulated in Annex III of the Council Directive 2006/95/EC.

Manufacturer/Importer



Test Laboratory

Signature



CHAN Ka Chun, Vincent
Authorized Signatory

Electrical Safety Department

For and on behalf of

The Hong Kong Standards and Testing Centre Ltd.

www.hkstc.org

Date of Issue: 2009-08-11




STC Test Report

Date : 2009-08-11

Page 1 of 15

No. : DE103469

- Applicant (FS100332)** : Chaozhou GAT Bathroom Equipment and Supplies Manufacturing Co.,Ltd.
Fengtang Industrial Zone,Chaoan,Chaozhou,Guangdong,China
- Description of Samples** : Product: Steam Room Control
Brand name: STEPON
Model no.: S163
Electrical rating: 220-240V 50/60Hz, 3200W
Quantity submitted: 2 pieces
Country of origin: China
Country of destination: Europe
Manufacturer: Chaozhou GAT Bathroom Equipment and Supplies Manufacturing Co.,Ltd.
- Date Samples Received** : 2009-06-03
- Date Tested** : 2009-06-03 to 2009-07-30
- Investigation Requested** : Test for compliance with safety requirements of EN60335-2-105 read in conjunction with EN60335-1.
- Conclusions** : The submitted samples complied with the requirements of
- EN60335-1: 2002+ A1: 2004 + A11: 2004 + A2: 2006 + A12: 2006
- EN60335-2-105: 2005 + A1: 2008
Household and similar electrical appliances – Safety Part 1. General requirements
Part 2-105. Particular requirements for multifunctional shower cabinets
- Remarks** : The appliance is only a control box. It shall not be used alone and must be fixed with other appliances, such as shower cabinets. Therefore, the safety of appliance shall be taken into account entirely.


CHAN Ka Chun, Vincent
Authorized Signatory
Electrical Safety Department
For and on behalf of

The Hong Kong Standards and Testing Centre Ltd.



The Hong Kong Standards and Testing Centre Ltd.

10 Dai Wang Street, Taipo Industrial Estate, N. T., Hong Kong
Tel: (852) 2666 1888 Fax: (852) 2664 4353 E-mail: hkstc@hkstc.org Homepage: www.hkstc.org

This report shall not be reproduced unless with prior written approval from The Hong Kong Standards and Testing Centre Ltd.
For Conditions of Issuance of this test report, please refer to the overleaf or Homepage.



STC Test Report

Date : 2009-08-11
No. : DE103469

Page 2 of 15

EN60335 HOUSEHOLD AND SIMILAR ELECTRICAL APPLIANCES - SAFETY
PART 1. GENERAL REQUIREMENTS
PART 2-105 PARTICULAR REQUIREMENTS FOR MULTIFUNCTIONAL
SHOWER CABINETS

<u>Clause</u>	<u>Description</u>	<u>Result</u>	<u>Remark</u>
1	Scope.....	Noted	--
2	Normative references.....	Noted	--
3	Definitions	Noted	--
4	General requirement	Noted	--
5	General conditions for the tests.....	Noted	--
6	Classification	Complied	--
7	Marking and instructions	Complied	--
8	Protection against access to live parts.....	Complied	--
9	Starting of motor-operated appliances	Not applicable	--
10	Power input and current	Complied	--
11	Heating.....	Complied	--
12	Void.....	--	--
13	Leakage current and electric strength at operating temperature	Complied	--
14	Transient overvoltages	Not applicable	--
15	Moisture resistance	Complied	--
16	Leakage current and electric strength	Complied	--
17	Overload protection of transformer and associated circuits	Complied	--
18	Endurance	Not applicable	--
19	Abnormal operation	Complied	--
20	Stability and mechanical hazards.....	Not applicable	--
21	Mechanical strength.....	Complied	--
22	Construction.....	Complied	--
23	Internal wiring.....	Complied	--
24	Components	Complied	See Supplement A
25	Supply connection and external flexible cords.....	Complied	--
26	Terminals for external conductors.....	Complied	--

The Hong Kong Standards and Testing Centre Ltd.

10 Dai Wang Street, Taipo Industrial Estate, N. T., Hong Kong
Tel: (852) 2666 1888 Fax: (852) 2664 4353 E-mail: hkstc@hkstc.org Homepage: www.hkstc.org

This report shall not be reproduced unless with prior written approval from The Hong Kong Standards and Testing Centre Ltd.
For Conditions of Issuance of this test report, please refer to the overleaf or Homepage.



STC Test Report

Date : 2009-08-11
No. : DE103469

Page 3 of 15

EN60335 HOUSEHOLD AND SIMILAR ELECTRICAL APPLIANCES - SAFETY
PART 1. GENERAL REQUIREMENTS
PART 2-105 PARTICULAR REQUIREMENTS FOR MULTIFUNCTIONAL
SHOWER CABINETS

<u>Clause</u>	<u>Description</u>	<u>Result</u>	<u>Remark</u>
27	Provision for earthing	Noted	--
28	Screws and connections	Complied	--
29	Clearances, creepage distances and solid insulation.....	Complied	--
30	Resistance to heat and fire	Complied	--
31	Resistance to rusting	Complied	--
32	Radiation, toxicity and similar hazards.....	Complied	--
Annex A	Routine test	Noted	--
Annex B	Appliances powered by rechargeable batteries.....	Not applicable	--
Annex C	Ageing test on motors	Not applicable	--
Annex D	Thermal motor protectors	Not applicable	--
Annex E	Needle flame test	Complied	--
Annex F	Capacitor	Not applicable	--
Annex G	Safety isolating transformer.....	Complied	--
Annex H	Switches	Not applicable	--
Annex I	Motors have basic insulation that is inadequate for the rated voltage of the appliance	Not applicable	--
Annex J	Coated printed circuit boards.....	Not applicable	--
Annex K	Overvoltage categories	Complied	--
Annex L	Guidance for the measurement of clearance and creepage distances.....	Noted	--
Annex M	Pollution degree	Complied	--
Annex N	Proof tracking test.....	Complied	--
Annex O	Selection and sequence of the tests of clause 30	Noted	--

The Hong Kong Standards and Testing Centre Ltd.

10 Dai Wang Street, Taipo Industrial Estate, N. T., Hong Kong
Tel: (852) 2666 1888 Fax: (852) 2664 4353 E-mail: hkstc@hkstc.org Homepage: www.hkstc.org

This report shall not be reproduced unless with prior written approval from The Hong Kong Standards and Testing Centre Ltd.
For Conditions of Issuance of this test report, please refer to the overleaf or Homepage.



STC Test Report

Date : 2009-08-11
No. : DE103469

Page 4 of 15

EN60335 HOUSEHOLD AND SIMILAR ELECTRICAL APPLIANCES - SAFETY
PART 1. GENERAL REQUIREMENTS
PART 2-105 PARTICULAR REQUIREMENTS FOR MULTIFUNCTIONAL
SHOWER CABINETS

<u>Clause</u>	<u>Description</u>	<u>Result</u>	<u>Remark</u>
Annex P	Guidance for the application of this standard to appliances used in warm damp equable climates.....	Noted	--
Annex Q	Sequence of tests for the evaluation of electronic circuits.....	Noted	--
Annex R	Software evaluation	Not applicable	--
Annex ZA	Special national conditions	Complied	Europe
Annex ZB	A-deviations.....	Complied	--
Annex ZC	Normative references to international publications with their corresponding European publications.....	Noted	--
Annex ZD	IEC and CENELEC code designations for flexible cords.....	Noted	--

The Hong Kong Standards and Testing Centre Ltd.

10 Dai Wang Street, Taipo Industrial Estate, N. T., Hong Kong
Tel: (852) 2666 1888 Fax: (852) 2664 4353 E-mail: hkstc@hkstc.org Homepage: www.hkstc.org

This report shall not be reproduced unless with prior written approval from The Hong Kong Standards and Testing Centre Ltd.
For Conditions of Issuance of this test report, please refer to the overleaf or Homepage.



STC Test Report

Date : 2009-08-11
No. : DE103469

Page 5 of 15

Supplement A – List of critical components

object/part No.	manufac-turer/trademark	type/model	technical data	standard	mark(s) of conformity ¹⁾
24	TABLE: list of critical components and materials				
Supply Cord	Huasheng Electrical Industrial Co., Ltd.	H05VV-F	300/500V 3×2.5 mm ²	IEC60227	VDE
Interconnection Cord	Ching Cheng Wire Material Co., Ltd.	H03VVH2-F	450/750V 2×0.5 mm ²	IEC60227	VDE
Relay	Xiamen Hongfa Electroacoustic Co., Ltd.	HF2160	AC240V, 30A	EN61810-1	TÜV
X Capacitor C101	Shenzhen Xinguangdian Electronics Co., Ltd.	XGD-X2	275V~, 0.01μF 40/100/21	IEC60384-14	VDE
X Capacitor C316	Shenzhen Xinguangdian Electronics Co., Ltd.	XGD-X2	275V~, 0.1μF 40/100/21	IEC60384-14	VDE
Thermal Cut-out Built-in Boiler	Aupo Electronic Co., Ltd.	BF133	AC 250 V 16A, Tf: 133°C	EN60730-1 EN60730-2-9	VDE
Transformer	Foshan Gaojie Electronic Co., Ltd.	EI5730C	PRI.: AC225V 50Hz (RED) SEC.1, 11V~ 1.5A (YLW) 2, 9.5V~ 0.8A (BLU.)	EN60335-1	Test within Appliance

The Hong Kong Standards and Testing Centre Ltd.

10 Dai Wang Street, Taipo Industrial Estate, N. T., Hong Kong
Tel: (852) 2666 1888 Fax: (852) 2664 4353 E-mail: hkstc@hkstc.org Homepage: www.hkstc.org

This report shall not be reproduced unless with prior written approval from The Hong Kong Standards and Testing Centre Ltd.
For Conditions of Issuance of this test report, please refer to the overleaf or Homepage.



STC Test Report

Date : 2009-08-11
No. : DE103469

Page 6 of 15

Supplement A – List of critical components

24 TABLE: list of critical components and materials (cont'd)					
object/part No.	manufac-turer/trademark	type/model	technical data	standard	mark(s) of conformity ¹⁾
Thermal Link of Transformer	Aupo Electronic Co., Ltd.	A1	250V/2A Tf: 125°C	EN60691	VDE
Windings of Transformer	Guangzhou Chunhui Electrical Appliances Co Ltd	XUEW-UL	MW75, 130°C	EN60335-1	Test within Appliance
Bobbin of Transformer	Basf Aktiengesellschaft	PA66, A3K	125°C	EN60335-1	Test within Appliance
Insulating Tape of Transformer	Foshan Inder Adhesive Products Co., Ltd.	24D	130°C	EN60335-1	Test within Appliance
Primary Lead Wire of Transformer	Zhong Shan Yong Roi Electric Factory Co., Ltd.	1672	105°C, 300V, 20AWG	EN60335-1	Test within Appliance
Secondary Lead Wire of Transformer	Zhong Shan Yong Roi Electric Factory Co., Ltd.	1015	105°C, 600V, 22AWG	EN60335-1	Test within Appliance
Material of PCB	Shunde Jun'an Shengsheng Electronic Co., Ltd.	S-V0	V-0, 130°C	EN60335-1	Test within Appliance

The Hong Kong Standards and Testing Centre Ltd.

10 Dai Wang Street, Taipo Industrial Estate, N. T., Hong Kong
Tel: (852) 2666 1888 Fax: (852) 2664 4353 E-mail: hksto@hksto.org Homepage: www.hksto.org

This report shall not be reproduced unless with prior written approval from The Hong Kong Standards and Testing Centre Ltd.
For Conditions of Issuance of this test report, please refer to the overleaf or Homepage.



STC Test Report

Date : 2009-08-11
No. : DE103469

Page 7 of 15

Supplement A – List of critical components

object/part No.	manufac-turer/trademark	type/model	technical data	standard	mark(s) of conformity ¹⁾
24	TABLE: list of critical components and materials (cont'd)				
Internal Wirings Connected to Thermal Cut-out	Guangzhou Tang Yao Wires Co., Ltd.	1332	FEP, 300V, 200°C, 13AWG	EN60335-1	Test within Appliance
Heater	Xing Long Electrical Heating Appliance Electronic Co., Ltd.	Vertical-135-3	230V 3000W	EN60335-1	Test within Appliance
Heat-Shrink Tube	Guangzhou Kaiheng Enterprise Group	K-2	125°C, 300 V	EN60335-1	Test within Appliance

¹⁾ An asterisk indicates a mark which assures the agreed level of surveillance.

The Hong Kong Standards and Testing Centre Ltd.

10 Dai Wang Street, Taipo Industrial Estate, N. T., Hong Kong
Tel: (852) 2666 1888 Fax: (852) 2664 4353 E-mail: hkstc@hkstc.org Homepage: www.hkstc.org

This report shall not be reproduced unless with prior written approval from The Hong Kong Standards and Testing Centre Ltd.
For Conditions of Issuance of this test report, please refer to the overleaf or Homepage.

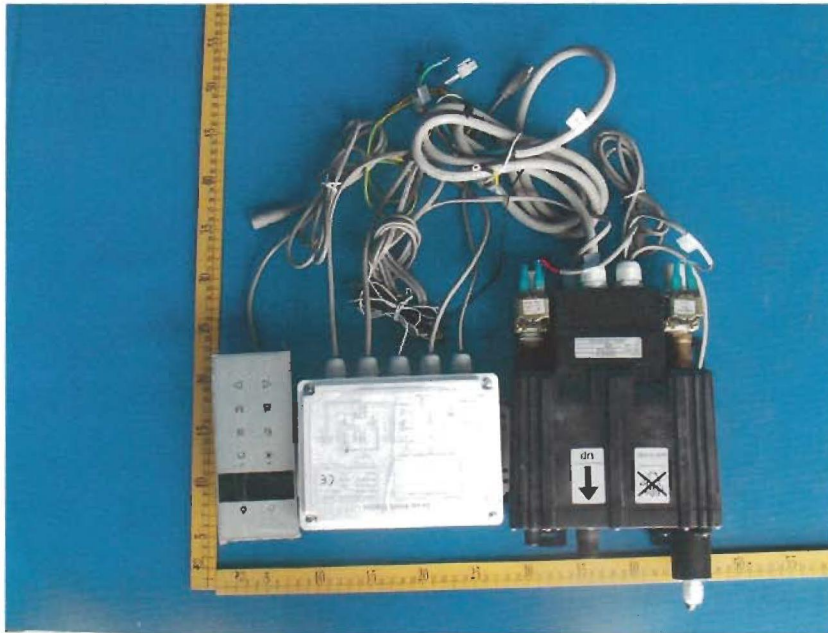


STC Test Report

Date : 2009-08-11
No. : DE103469

Page 8 of 15

Product Photographs



The Hong Kong Standards and Testing Centre Ltd.

10 Dai Wang Street, Taipo Industrial Estate, N. T., Hong Kong
Tel: (852) 2666 1888 Fax: (852) 2664 4353 E-mail: hkstc@hkstc.org Homepage: www.hkstc.org

This report shall not be reproduced unless with prior written approval from The Hong Kong Standards and Testing Centre Ltd.
For Conditions of Issuance of this test report, please refer to the overleaf or Homepage.

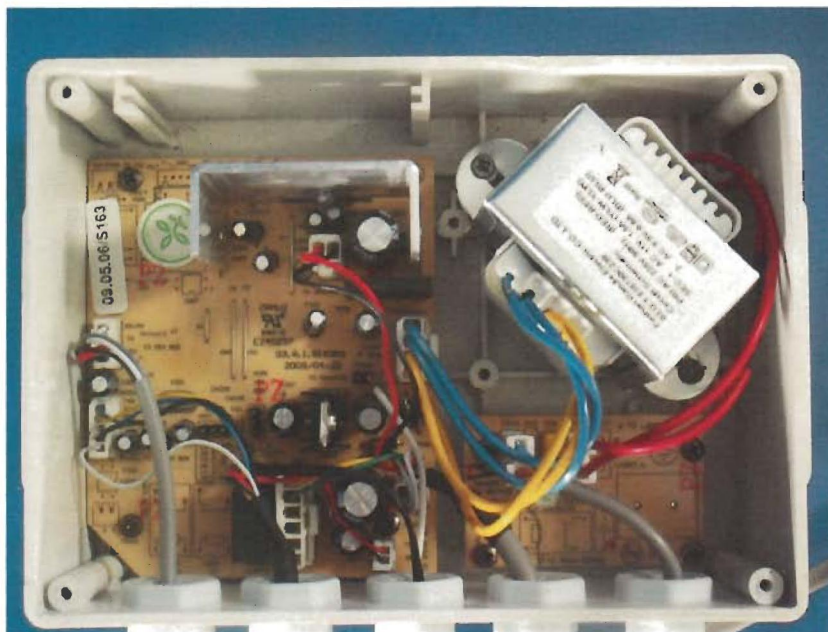


STC Test Report

Date : 2009-08-11
No. : DE103469

Page 9 of 15

Product Photographs



The Hong Kong Standards and Testing Centre Ltd.

10 Dai Wang Street, Taiipo Industrial Estate, N. T., Hong Kong
Tel: (852) 2666 1888 Fax: (852) 2664 4353 E-mail: hkstc@hkstc.org Homepage: www.hkstc.org

This report shall not be reproduced unless with prior written approval from The Hong Kong Standards and Testing Centre Ltd.
For Conditions of Issuance of this test report, please refer to the overleaf or Homepage.

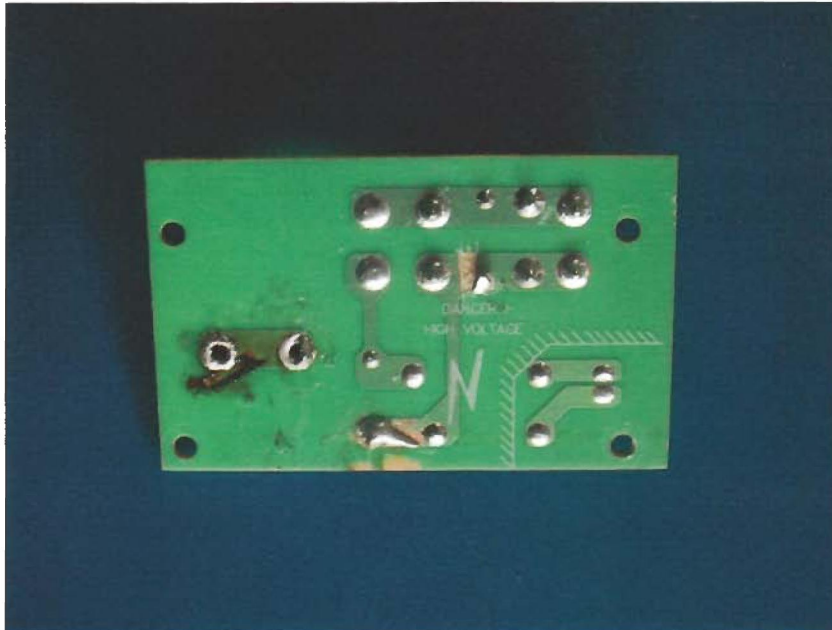
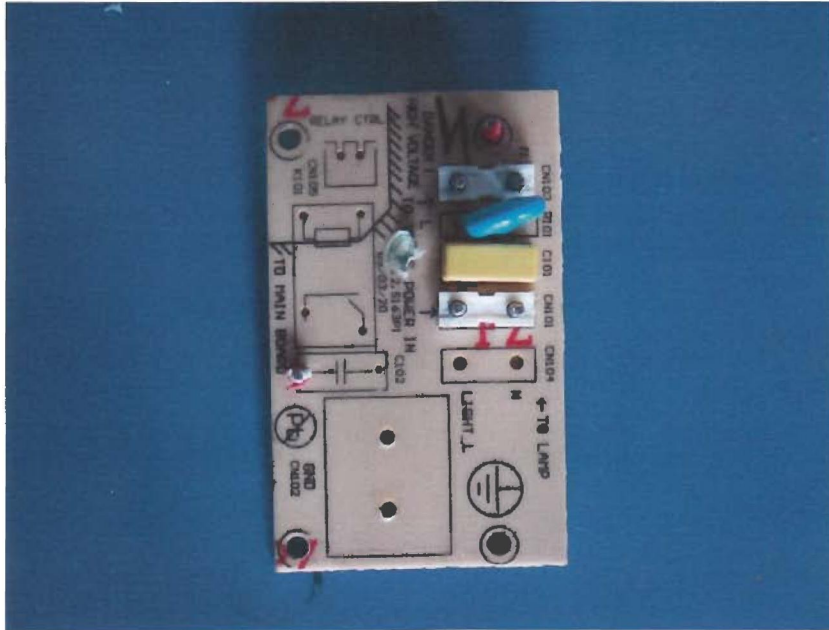


STC Test Report

Date : 2009-08-11
No. : DE103469

Page 10 of 15

Product Photographs



The Hong Kong Standards and Testing Centre Ltd.

10 Dai Wang Street, Taiipo Industrial Estate, N. T., Hong Kong
Tel: (852) 2666 1888 Fax: (852) 2664 4353 E-mail: hkstc@hkstc.org Homepage: www.hkstc.org

This report shall not be reproduced unless with prior written approval from The Hong Kong Standards and Testing Centre Ltd.
For Conditions of Issuance of this test report, please refer to the overleaf or Homepage.

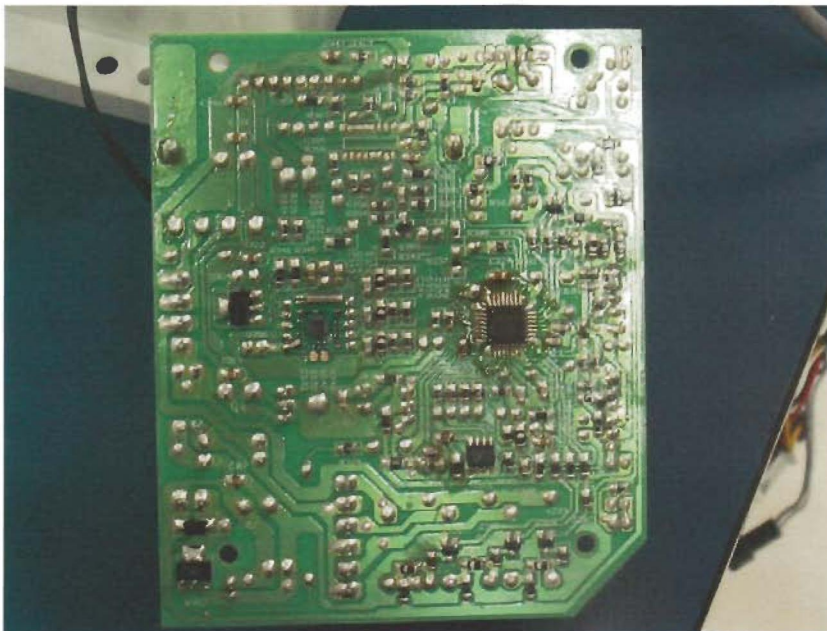
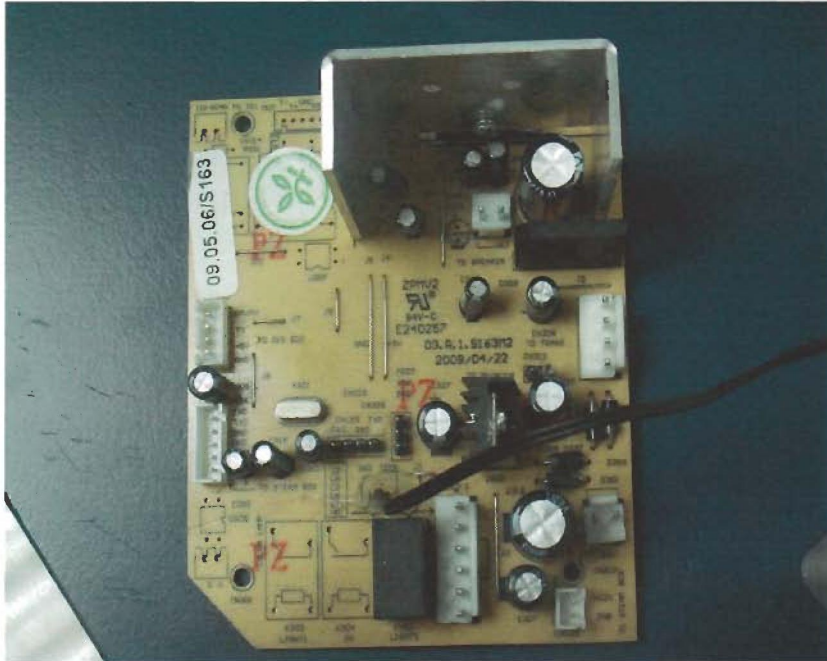


STC Test Report

Date : 2009-08-11
No. : DE103469

Page 11 of 15

Product Photographs



The Hong Kong Standards and Testing Centre Ltd.

10 Dai Wang Street, Taipo Industrial Estate, N. T., Hong Kong
Tel: (852) 2666 1888 Fax: (852) 2664 4353 E-mail: hkstc@hkstc.org Homepage: www.hkstc.org

This report shall not be reproduced unless with prior written approval from The Hong Kong Standards and Testing Centre Ltd.
For Conditions of Issuance of this test report, please refer to the overleaf or Homepage.

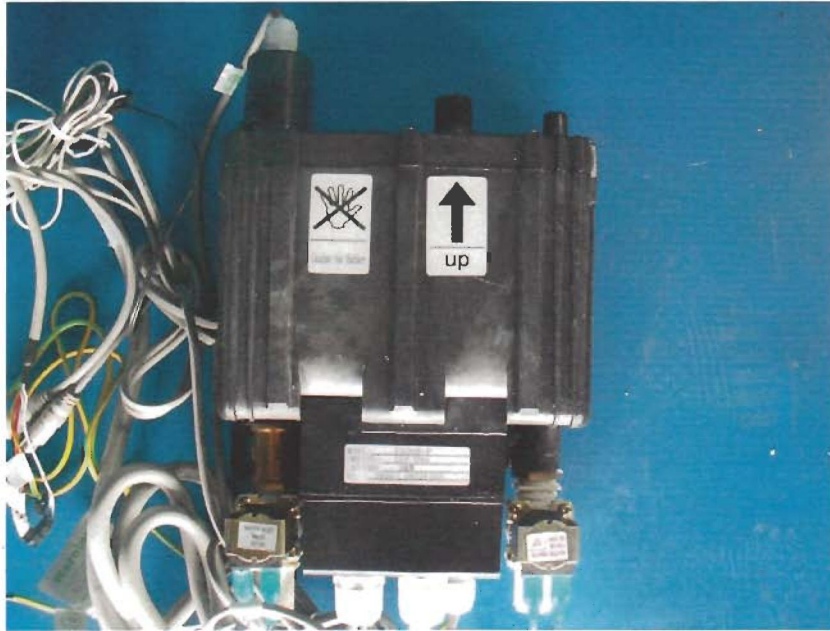


STC Test Report

Date : 2009-08-11
No. : DE103469

Page 12 of 15

Product Photographs



The Hong Kong Standards and Testing Centre Ltd.

10 Dai Wang Street, Taipo Industrial Estate, N. T., Hong Kong
Tel: (852) 2666 1888 Fax: (852) 2664 4353 E-mail: hksto@hksto.org Homepage: www.hksto.org

This report shall not be reproduced unless with prior written approval from The Hong Kong Standards and Testing Centre Ltd.
For Conditions of issuance of this test report, please refer to the overleaf or Homepage.

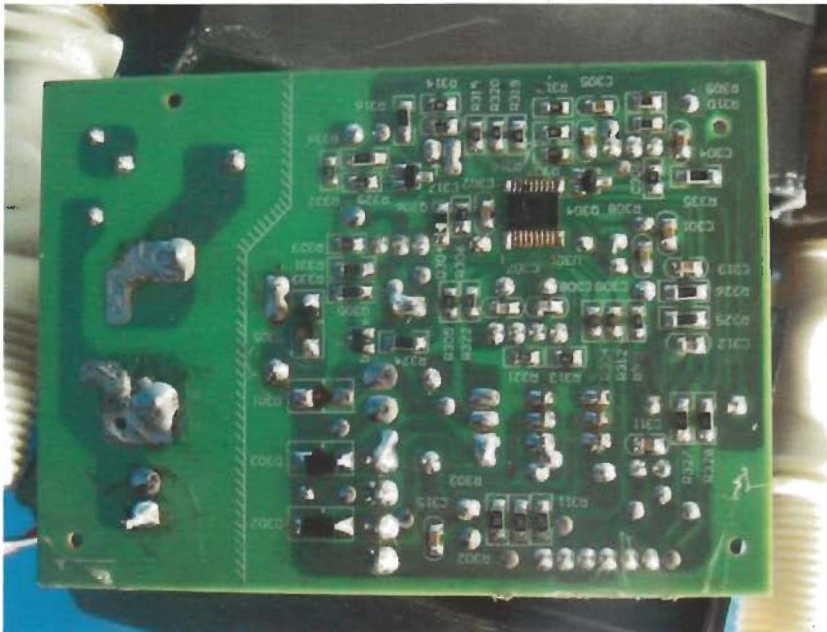
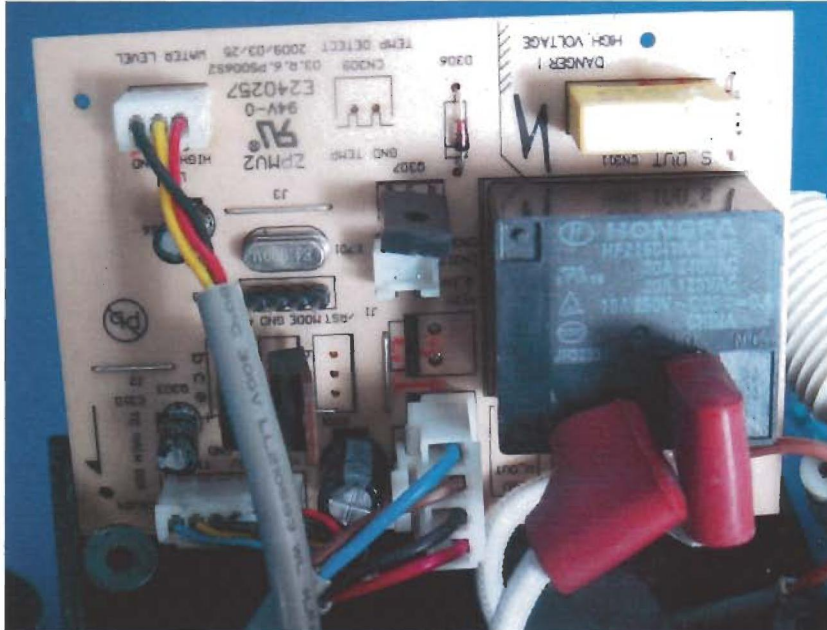


STC Test Report

Date : 2009-08-11
No. : DE103469

Page 13 of 15

Product Photographs



The Hong Kong Standards and Testing Centre Ltd.

10 Dai Wang Street, Taipo Industrial Estate, N. T., Hong Kong
Tel: (852) 2666 1888 Fax: (852) 2664 4353 E-mail: hkstc@hkstc.org Homepage: www.hkstc.org

This report shall not be reproduced unless with prior written approval from The Hong Kong Standards and Testing Centre Ltd.
For Conditions of Issuance of this test report, please refer to the overleaf or Homepage.

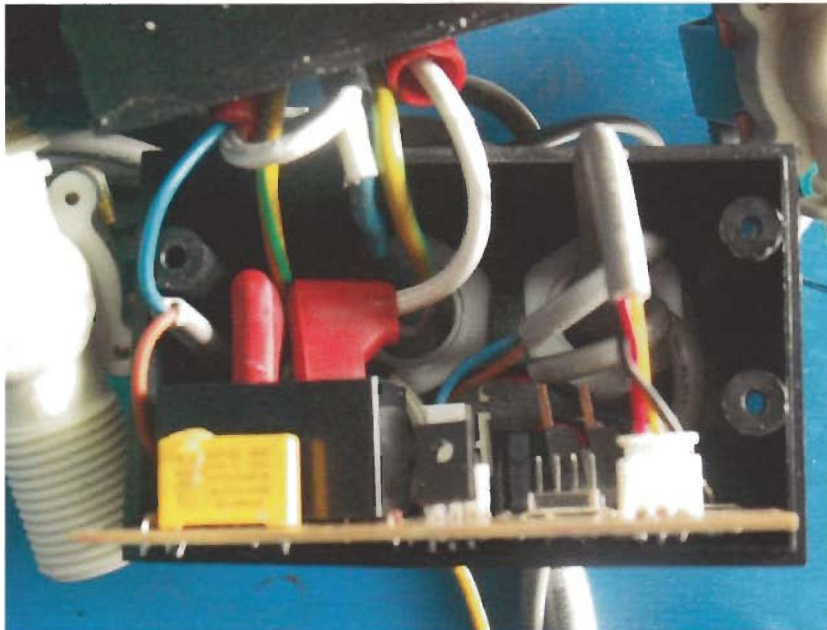
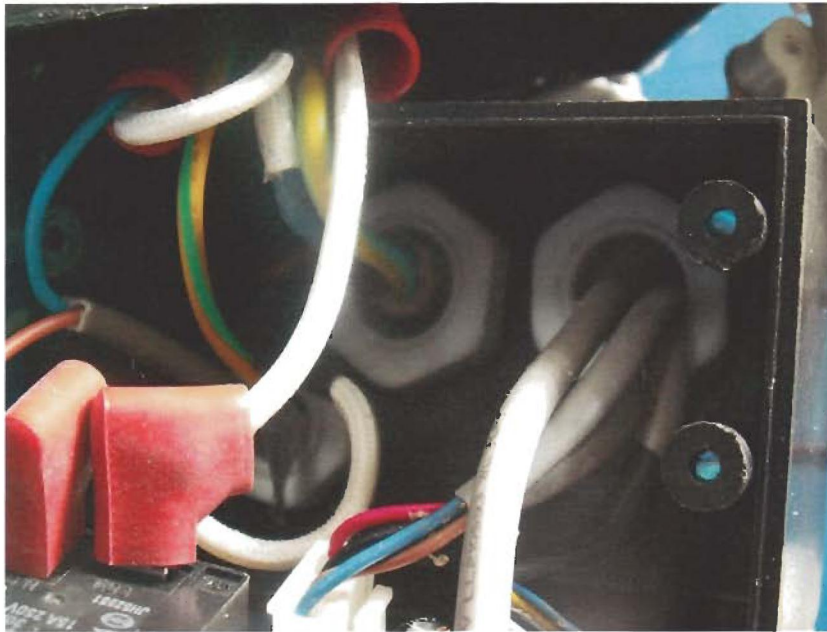


STC Test Report

Date : 2009-08-11
No. : DE103469

Page 14 of 15

Product Photographs



The Hong Kong Standards and Testing Centre Ltd.

10 Dai Wang Street, Taiipo Industrial Estate, N. T., Hong Kong
Tel: (852) 2666 1888 Fax: (852) 2664 4353 E-mail: hkstc@hkstc.org Homepage: www.hkstc.org

This report shall not be reproduced unless with prior written approval from The Hong Kong Standards and Testing Centre Ltd.
For Conditions of Issuance of this test report, please refer to the overleaf or Homepage.

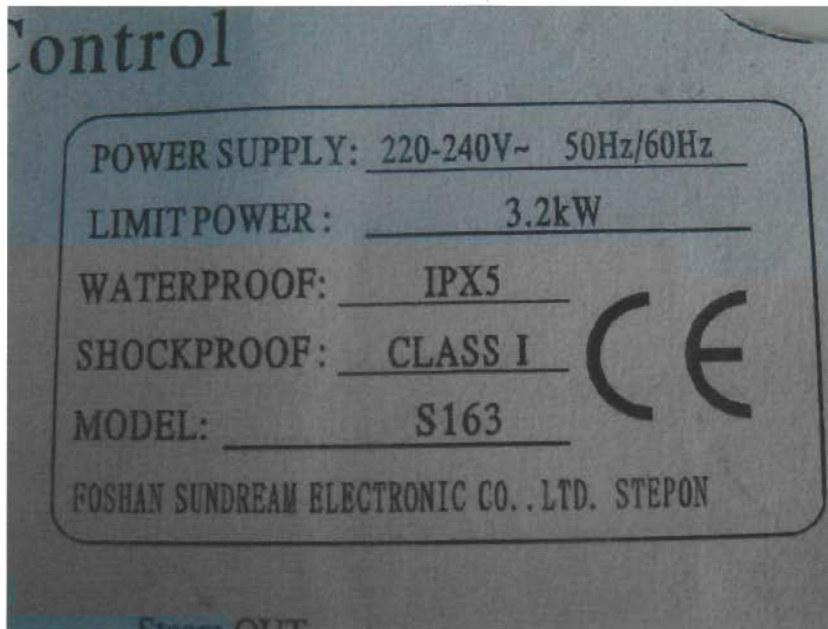
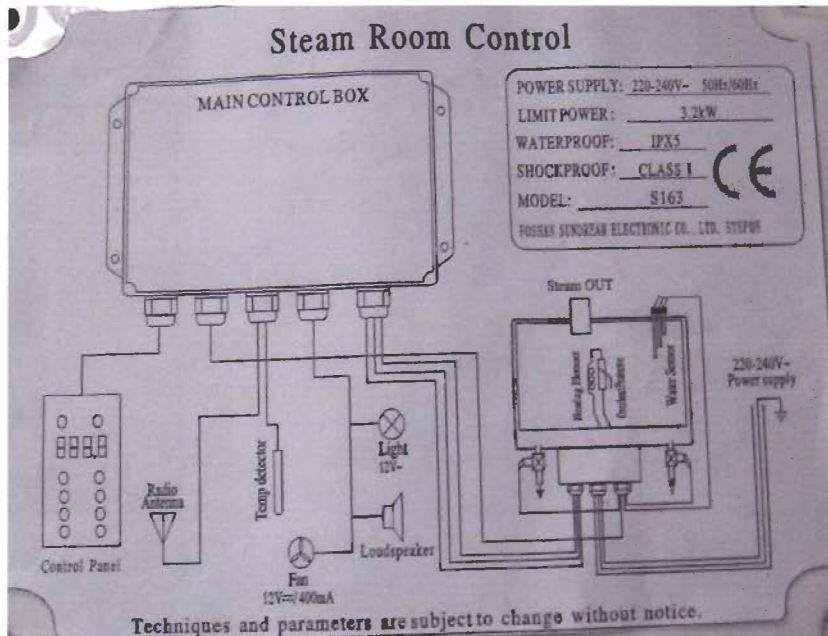


STC Test Report

Date : 2009-08-11
No. : DE103469

Page 15 of 15

Product Photographs



***** End of Test Report *****

The Hong Kong Standards and Testing Centre Ltd.

10 Dai Wang Street, Taipo Industrial Estate, N. T., Hong Kong
Tel: (852) 2666 1888 Fax: (852) 2664 4353 E-mail: hkstc@hkstc.org Homepage: www.hkstc.org

This report shall not be reproduced unless with prior written approval from The Hong Kong Standards and Testing Centre Ltd.
For Conditions of Issuance of this test report, please refer to the overleaf or Homepage.